

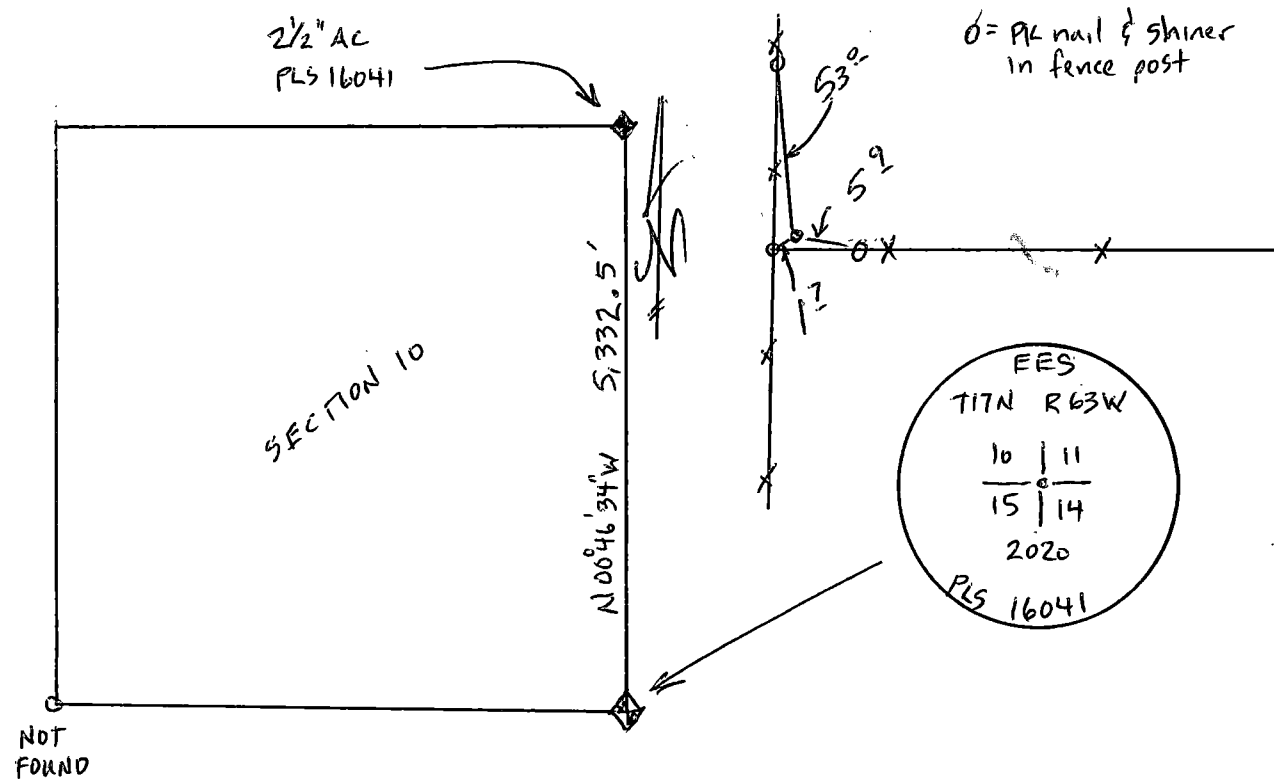
# State of Wyoming Corner Record

(In compliance with the *CORNER PERPETUATION AND FILING ACT*, Wyoming Statutes, 1997, Section 33-29-140, et seq., and the Rules and Regulations of the Board of Registration for Professional Engineers and Professional Land Surveyors)

Reverse side of this form may be used if more space is needed.

Record of original survey and citation of source of historical information (if corner is lost or obliterated). Description of corner monumentation evidence found and/or monument and accessories established to perpetuate the location of this corner. Sketch of relative location of monument, accessories, and reference points with course and distance to adjacent corner(s) (if determined in this survey). Method and rationale for reestablishment of lost or obliterated corner.

Nothing Found -  
 Set #6 rebar with 2 1/2" Aluminum Cap PLS 16041 (see sketch of cap)



RECP #: 802545  
 RECORDED 2/22/2021 AT 9:49 AM BK# 2720 PG# 1749  
 Debra K. Lee, CLERK OF LARAMIE COUNTY, WY PAGE 1 OF 1

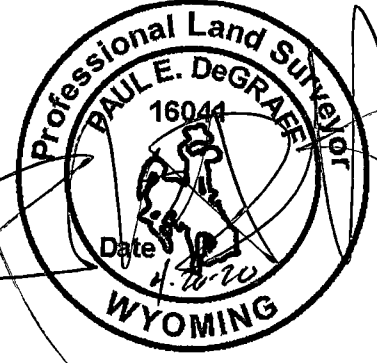
Date of Field Work: 3-27-2020 Office Reference: Job #61927

### CROSS INDEX DIAGRAM

	1	2	3	4	5	6	7	8	9	10	11	12	13	14	15	16	17	18	19	20	21	22	23	24	25
A																									
B																									
C		6																							
D			5																						
E				4																					
F					3																				
G						2																			
H							1																		
I																									
J																									
K																									
L																									
M																									
N																									
O																									
P																									
Q																									
R																									
S																									
T																									
U																									
V																									
W																									
X																									
Y																									
Z																									

Land Surveyor / Firm / Address  
Paul E DeGraff  
Enccompass Energy Services  
10901 W. 120<sup>th</sup> AVE #406  
Broomfield Co 80021

This corner record was prepared by me or under my direction and supervision.  
 SEAL & SIGNATURE



Laramie County

Corner Name: SE Sec 10 Section: 10 T 17N R 63W: 6<sup>th</sup> P.M. Cross-Index No.: 175